

Optimize your Adobe licenses to unlock your institution's creative potential.

Are you making the most of your Adobe licenses? With the limits on generative credits for AI content creation, it may be time to look at your options and ensure that your institution is equipped with the best tools for success.

01

Understanding your license option: What is SDL?

SDL is a licensing model designed for labs and shared device setups, where multiple people use the devices and applications. This type of license is assigned to a device or computer instead of an individual. While SDL is ideal for classrooms and labs, it comes with the following limitations:

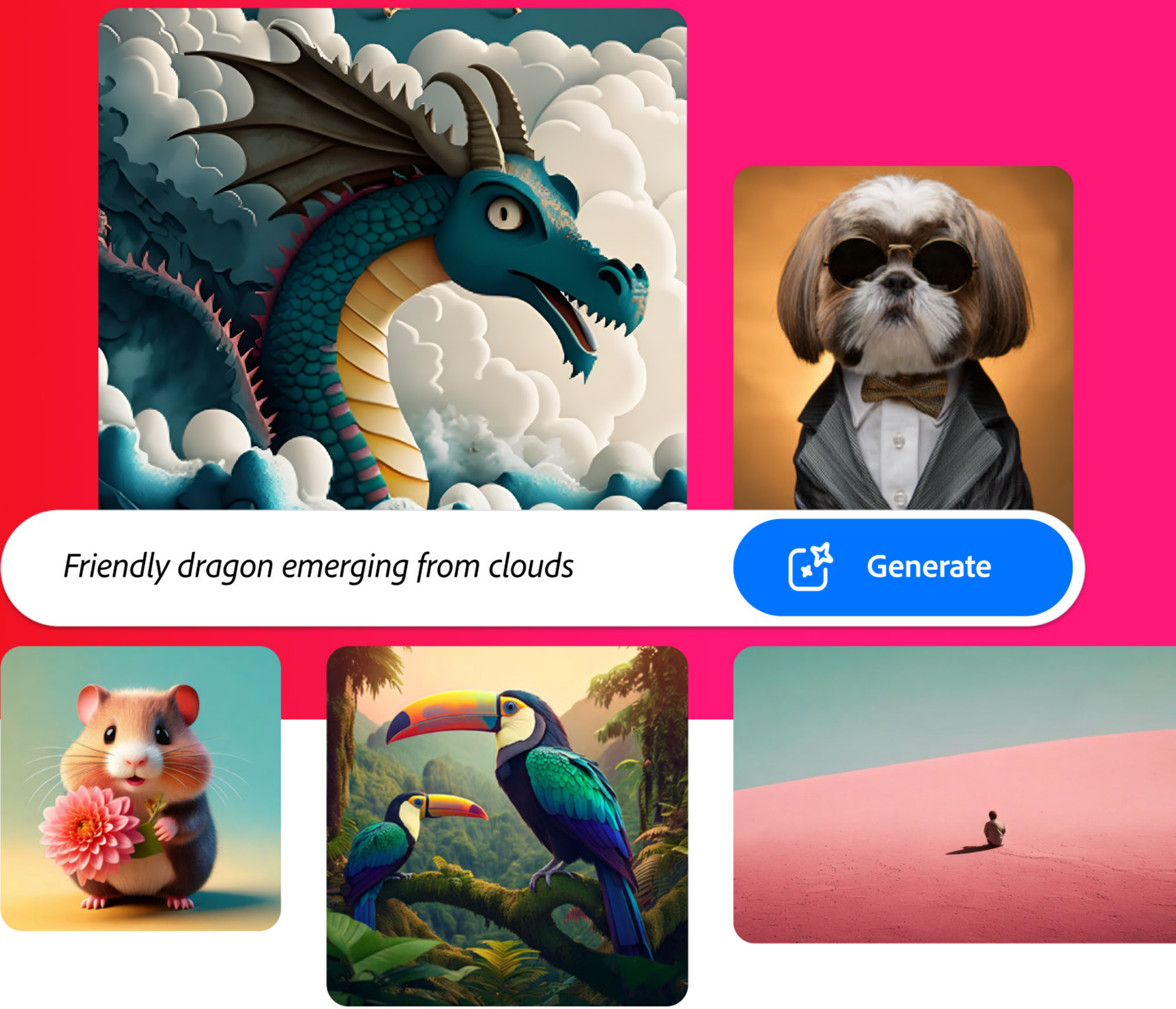
- **Limited access:** SDL setups don't include access to Firefly features in app, like generative fill and generative expand (available in Adobe Photoshop and Adobe Illustrator) or Adobe Express, the quick and easy create-anything app.
- **No access to Adobe Lightroom:** SDL setups don't offer access to the cloud-based app for editing and organizing photos.
- **Restricted services:** SDL setups don't directly entitle users to services such as storage, Adobe Creative Cloud Libraries, Adobe Fonts, Adobe Stock, or generative credits. These services and options are only available if the user account is customized to include them.

How can you get more from your SDL licenses?

There are different ways to supercharge your SDL licenses. One option is to **offer Adobe Express to students and staff**. This option gives users access to everything in Adobe Express—including features powered by Firefly—with their own accounts, enabling them to work on their projects both in the classroom and at home. By adding Adobe Express to your SDL setup, you can provide students and staff with:

- **More creative options:** With access to generative credits in Adobe Express and other Creative Cloud apps, students and staff can use features like Generative Fill or Generative Expand in Adobe Photoshop.
- **Opportunities to earn micro-credentials:** With their Adobe accounts, students and staff can take digital courses and demonstrate their skills with micro-credential badges.
- **Seamless flexibility:** Students and staff can start projects in class or in the office and then continue them at home thanks to Adobe app integration.

02



For a long-term perspective, consider SLP and NUL licenses.

03

Purchasing Student License Pack (SLP) for your students and Named-user Licensing (NUL) for staff can transform your educational environment.

When students are equipped with SLP licenses, they can start their design projects in class. For example, they can use generative credits to create stunning text effects and visuals with Firefly. At home, they can continue creating with Adobe apps, designing captivating presentations, posters, infographics, and other materials that include multimedia elements.

Staff members who have full access to Creative Cloud with NUL can use their licenses on any device, whether in their offices or at home. For example, they can start a document in Adobe Acrobat in the office and then fine-tune it in Adobe InDesign while working from home.

Gain a competitive advantage for your institution.

Equipping more students with Adobe apps not only fosters creativity, communication, and creative-thinking skills but also offers your institution a competitive advantage. You'll be known for your commitment to providing students with cutting-edge technology and preparing them for their future careers.



Ready to make the switch? Take action now!

License management is easy. Your institution's IT admins can quickly assign licenses to individual students, add or delete users, assign products, and add administrators in the Adobe Admin Console. Evaluate your current licenses and take the next step towards empowering your institution. To learn more contact your Adobe Authorized Reseller or [Adobe Authorized Education Elite Distributor](#).

04